

St James News

- Coronation celebration
- Learning celebration
- Curious not furious
- Upcoming dates

Dear St. James families,

It has been a bit of a short week with the bank holiday and industrial strike action, but we have still managed to pack plenty in with a fantastic end to the week with our Coronation Tea Party! Thank you so much to everyone who provided cake and managed to come along. It was a memorable event for all the children. Special thanks to the Parish Council who gave every child a special commemorative mug.



Learning celebration:

This week Year 3 have all been swimming. Miss Grice and Mrs Rivett have been so proud of the children, who have behaved brilliantly and have shown lots of resilience in the pool!



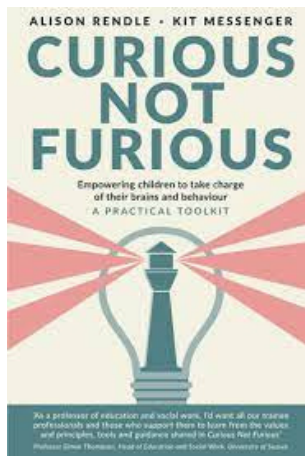
Curious Not Furious - Alison Rendle & Kit Messenger

The Empowerment Approach:

The Empowerment Approach is about giving children the tools to understand why they might be behaving in an unexpected way. It looks to help children to understand and take charge of their brains, putting them in a better position to plan and work on changes they want to make in their responses to people and events.

It develops children's skills in 4 key areas that are essential to achievement, happiness and social engagement:

1. Understanding their own thought processes
2. Believing that they can
3. Speaking up for themselves
4. Developing emotional intelligence



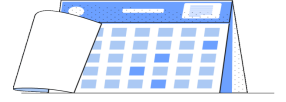
The key goal is to empower children to understand their brains, emotions, needs and stressors and learn how these impact on behaviour. This eventually leads to the children developing conscious control so that they can start changing behaviour.

The approach is built on three key principles:

1. children will benefit from learning about themselves
2. children need plenty of opportunities to learn and practise the skills needed to manage whatever challenges they encounter.
3. the way adults respond when things go wrong for children and how they follow up incidents are crucial factors in determining the outcome for the child.

This is a therapeutic approach to behaviour that puts the needs of the child at the centre - helping them to develop the understanding and skills that will enable them to manage future challenges. This means nurturing the child's self-belief by providing kind, calm, consistent support - no matter what happens.

Next week



Week beginning 8th May

Monday 8th May: Bank Holiday

Tuesday 9th May: Year 6 SATs - Grammar, punctuation, spelling & vocabulary
Board gaming club

Wednesday 10th May: Year 6 SATs- Reading
Dungeons & Dragons
TA sports

Thursday 11th May: Year 6 SATs - Maths papers 1 & 2
Marshall Arts

Friday 12th May: Year 6 SATs - Maths paper 3
Year 1 trip Cotswold Wildlife Park
TA sports